

GENERAL NOTES

THE TOPOGRAPHIC AND/OR BOUNDARY SURVEY INFORMATION CONTAINED IN THESE PLANS WAS PROVIDED BY VOX AND VOX SURVEYING. HORIZONTAL & VERTICAL CONTROL WAS ESTABLISHED BY REAL TIME KINEMATIC GPS USING ODOT VIRTUAL REFERENCE STATION VIA CELL PHONE.

HORIZONTAL CONTROL = NAD 83 (2011)
OH S.P.C.S.—SOUTH ZONE U.S. FEET
VERTICAL CONTROL = NAVD 88(GEOD12B) U.S. FEET

EROSION CONTROL

TEMPORARY EROSION, MUD AND DEBRIS CONTROL SHALL BE PROVIDED IN STRICT ACCORDANCE WITH SECTION 600 OF THE CLERMONT COUNTY STORMWATER MANAGEMENT AND SEDIMENT CONTROL REGULATIONS AND AS INDICATED IN THE PLANS.

THE CONTRACTOR SHALL CONTINUALLY MONITOR THE EFFECTIVENESS OF THE EROSION CONTROL, AND MAKE ANY AND ALL NECESSARY ADJUSTMENTS TO ASSURE ITS EFFECTIVENESS.

UNDERGROUND UTILITIES

THE LOCATIONS OF THE UNDERGROUND UTILITIES SHOWN ON THE PLANS ARE APPROXIMATE AND/OR AS OBTAINED FROM THE UTILITY COMPANIES AS REQUIRED BY SECTION 153.64 OF THE O.R.C. THE EXACT LOCATION OF AND TYPES OF UTILITIES ON OR ADJACENT TO THE PROJECT SHALL BE DETERMINED BY CONTRACTOR NOTIFICATION OF THE UNITED UTILITIES PROTECTION SERVICE PRIOR TO BEGINNING ANY EXCAVATION.

UTILITY OWNERSHIP

ELEC.: DUKE ENERGY
92 SOUTH FOURTH ST.
BATAVIA, OH 45103
(513) 287-5604

TELE: CINCINNATI BELL
201 EAST FOURTH ST
CINCINNATI, OH 45202
(513) 397_3104

SEWER & CLERMONT COUNTY WATER RESOURCES DEPARTMENT
WATER 4400 HASKELL LANE
Batavia, OH 45103
(513) 732-7934

CABLE Time Warner Cable
11252 Cornell Park Drive
Cincinnati, OH 45242
(513) 489-5892

STORM SEWER CONSTRUCTION

MIAMI TOWNSHIP WILL OBTAIN ALL PERMITS FOR WORK WITHIN THE RIGHT-OF-WAY AND STORM SEWER EASEMENTS.

ONE LANE OF TRAFFIC SHALL BE MAINTAINED. THE OPENINGS MUST BE PLATED WHEN LEFT UNATTENDED AND, THE PLATE SHALL BE RECESSED TO FIT NEATLY IN THE PAVEMENT, SUITABLE FOR PASSAGE OF TRAFFIC AND SNOW REMOVAL EQUIPMENT.

ALL SEWER SURFACE DRAINAGE CONSTRUCTION AND MATERIAL SHALL BE IN ACCORDANCE WITH SECTION 213 OF THE CURRENT EDITION OF THE CLERMONT COUNTY SUBDIVISION STREET DESIGN AND CONSTRUCTION STANDARDS AND ODOT ITEM 611 OF THE CURRENT EDITION OF THE STATE OF OHIO DEPARTMENT OF TRANSPORTATION CONSTRUCTION AND MATERIAL SPECIFICATIONS. ALL CONSTRUCTION IS TO BE UNDER THE INSPECTION AND SUPERVISION OF MIAMI TOWNSHIP OR MIAMI TOWNSHIP'S REPRESENTATIVE.

IN ADDITION, INLETS AND CATCH BASINS DESIGNATED BY ODOT STANDARD TYPES SHALL UTILIZE GRATES INDICATED ON ODOT'S STANDARD DWGS. OTHER CATCH BASINS SHALL HAVE GRATES AS INDICATED IN THE LOCAL STANDARDS OR ON THE PLANS.

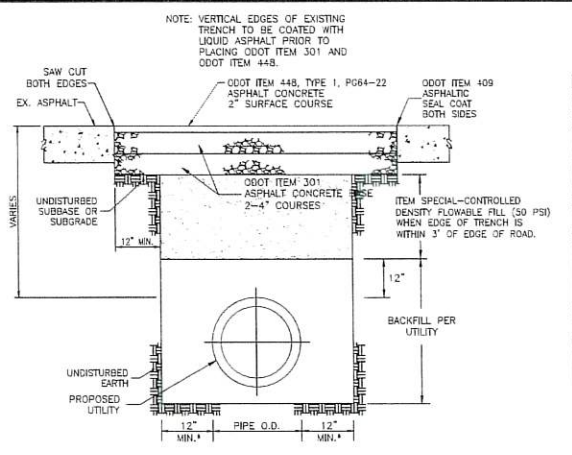
RCP INDICATES FLEX-A-MATT BY MOTZ INDUSTRIES PER ODOT ITEM 601.12 SLOPE AND CHANNEL PROTECTION PER DIMENSIONS SHOWN ON PLANS UNLESS OTHERWISE INDICATED. ROCK CHANNEL PROTECTION MAY BE USED.

THE PROPOSED OPENING IN THE PAVEMENT MUST BE SAW CUT WITH A DIAMOND BLADE PAVEMENT SAW AND ALL EXCAVATED MATERIAL REMOVED FROM THE AREA AND NOT PILED UPON THE PAVEMENT. THE OPENING(S) MUST BE BACKFILLED WITH LOW STRENGTH MORTAR BACKFILL MATERIAL PER ITEM 613. CLOSED WITH A PATCH CONSISTING OF EITHER (A) 8" OF CONCRETE BASE AND 1" OF 404 WEARING COURSE OR, (B) 8" OF 301 PLACED IN 2-4" LIFTS, 2" OF 404 OR, (C) MATCH EXISTING TYPICAL SECTION, AS DIRECTED BY THE MIAMI TOWNSHIP REPRESENTATIVE. THE 404 SHALL BE ROLLED LEVEL WITH THE SURROUNDING PAVEMENT AND THE EDGES SEALED.

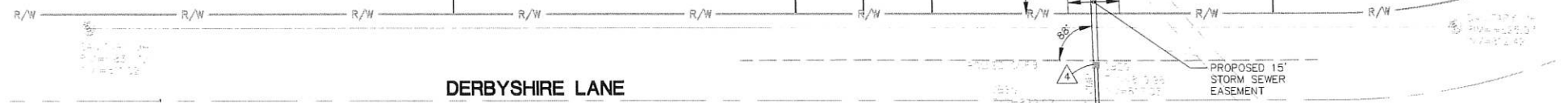
ANY SETTLEMENT OF THE PATCHES AND/OR STREET SURFACE WILL BE CONSIDERED CONCLUSIVE EVIDENCE OF DEFECTIVE BACKFILLING AND/OR PAVEMENT RESTORATION AND MUST BE CORRECTED AT ONCE.

SEEDING AND MULCHING

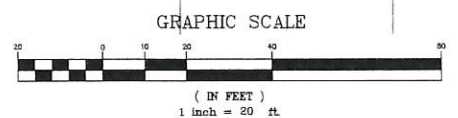
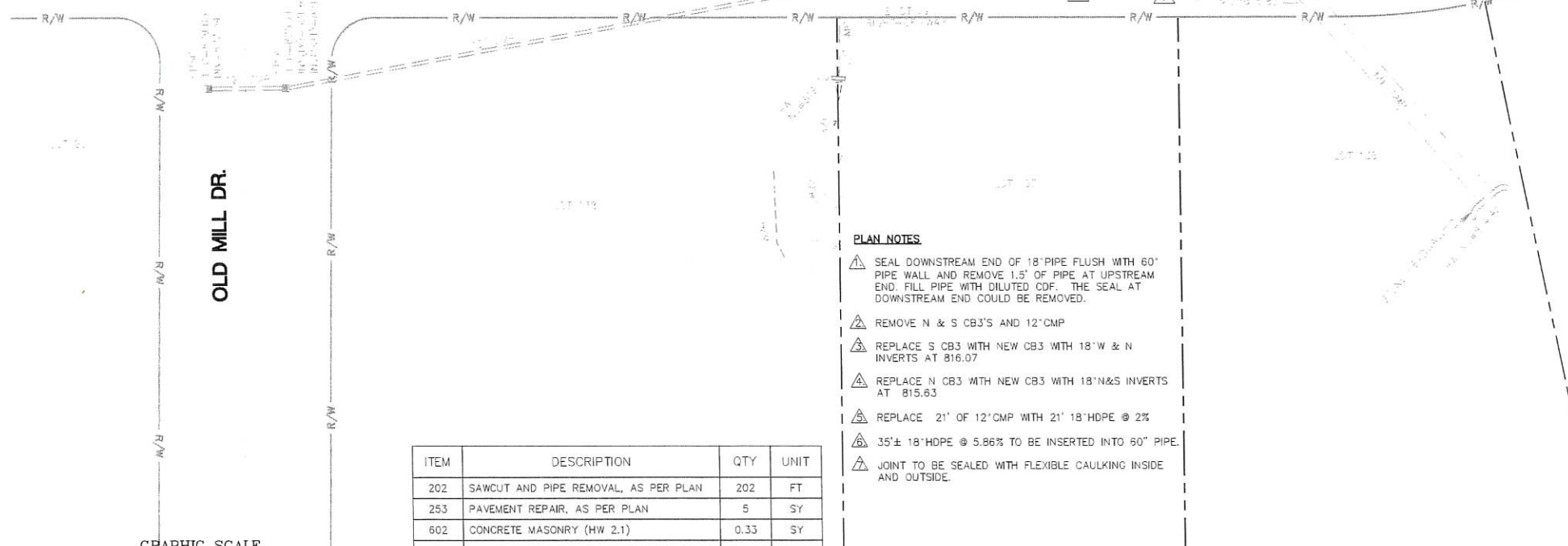
THE DISTURBED AREAS SHALL BE RESTORED IN ACCORDANCE WITH ODOT ITEM 659. THE CONTRACTOR SHALL SPREAD STOCKPILED TOPSOIL (OR PROVIDE TOPSOIL) OVER THE DISTURBED AREAS IN ACCORDANCE WITH ODOT ITEM 652 OR 653. SEEDING SHALL BE A MIXTURE TO MATCH THE ADJACENT NON-DISTURBED AREAS.



STANDARD TRENCH WITHIN EXISTING ROADWAY PAVEMENT
N.T.S. STD0013



DERBYSHIRE LANE



PLAN NOTES

- ⚠ SEAL DOWNSTREAM END OF 18" PIPE FLUSH WITH 60" PIPE WALL AND REMOVE 1.5' OF PIPE AT UPSTREAM END. FILL PIPE WITH DILUTED CDF. THE SEAL AT DOWNSTREAM END COULD BE REMOVED.
- ⚠ REMOVE N & S CB3'S AND 12" CMP
- ⚠ REPLACE S CB3 WITH NEW CB3 WITH 18" W & N INVERTS AT 816.07
- ⚠ REPLACE N CB3 WITH NEW CB3 WITH 18" N&S INVERTS AT 815.63
- ⚠ REPLACE 21' OF 12" CMP WITH 21' 18" HDPE @ 2%
- ⚠ 35'± 18" HDPE @ 5.86% TO BE INSERTED INTO 60" PIPE.
- ⚠ JOINT TO BE SEALED WITH FLEXIBLE CAULKING INSIDE AND OUTSIDE.

ITEM	DESCRIPTION	QTY	UNIT
202	SAWCUT AND PIPE REMOVAL, AS PER PLAN	202	FT
253	PAVEMENT REPAIR, AS PER PLAN	5	SY
602	CONCRETE MASONRY (HW 2.1)	0.33	SY
611	CATCH BASIN, NO. 3, AS PER PLAN	2	EACH
611	18" CONDUIT, TYPE B (HDPE)	21	FT
611	18" CONDUIT, TYPE C (HDPE)	40	FT
611	CONDUIT, MISC.: PLUG 18" CONNECTION TO 60" CONDUIT	1	LS
611	CONDUIT, MISC.: PLUG AND FILL EXISTING 18" CONDUIT	50	FT
659	SEEDING AND MULCHING	135	SY
SPECIAL	CONTROLLED DENSITY BACKFILL	7	CY
614	MAINTAINING TRAFFIC	1	LS
623	CONSTRUCTION LAYOUT STAKES AND SURVEYING	1	LS



VICINITY MAP
N.T.S.

ROBERTS ENGINEERING INCORPORATED
602 LILA AVE., MILFORD, OHIO 45150
PHONE (513) 831-6688 FAX (513) 831-6884

**DERBYSHIRE LANE
STORM SEWER IMPROVEMENT**
MIAMI TOWNSHIP
CLERMONT COUNTY, OHIO

PLAN

ISSUES	NO.	DATE	PURPOSE
	1	9/03/21	TOWNSHIP REVIEW
	2	9/22/21	EASEMENTS
	3	7/20/23	REV. STM

SCALE: 1" = 20'
DATE: 8/24/21
DESIGNED: RWR
DRAWN: JLC
CHECKED: RWR
SHEET 1/1
PROJECT 1749