



**Land Use Plan Update**  
**Steering Committee**  
**Meeting #2**  
**September 30, 2021**



## Introductions & Project Purpose

### Introductions

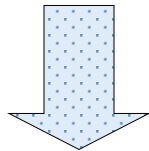
**Township Staff**

**Land Use Consultant**

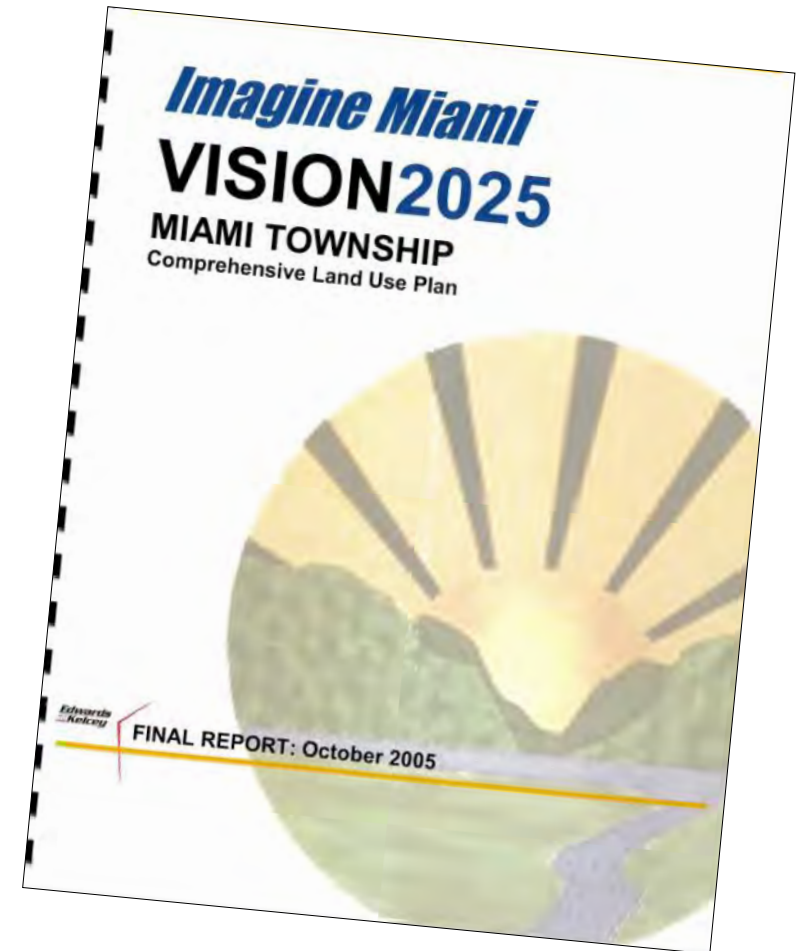
**Steering Committee**

### Project Purpose

**Update Vision 2025 Plan**



**(Update Land Use + Connectivity Plan)**



## **Updated Project Schedule**

<b>Steering Committee #1</b>	<b>January 30, 2020</b>
<b>Steering Committee #2</b>	<b>September 30, 2021</b>
<b>Steering Committee #3</b>	<b>November 2021</b>
<b>Public Open House</b>	<b>January 2022</b>
<b>Steering Committee #4</b>	<b>February 2022</b>
<b>Township Trustees Work Session</b>	<b>March 2022</b>
<b>Zoning Commission Work Session</b>	<b>April 2022</b>
<b>Township Trustees Public Hearing</b>	<b>May 2022</b>

## **Multi-Family Land Use**

### **Topics for Breakout Group Exercise**

- 1. Types of Multi-Family Development?**
- 2. Density (Units per Acre)?**
- 3. Density (Amount of Multi-Family Developments in Township)?**
- 4. Where to Locate New Multi-Family Development?**



## Multi-Family Land Use • Landominium / Patio Home





## Multi-Family Land Use • Townhome





## Multi-Family Land Use • Townhome



## Multi-Family Land Use • Apartment Development





## Multi-Family Land Use • Apartment Development



## **State Route 28 Special Planning Area**

### **Topics for Breakout Group Exercise**

- 1. What is Your Future Vision / Desired Land Use for the Corridor Area?**
- 2. Thoughts & Ideas on Pedestrian Connectivity Within the Corridor Area?**
- 3. Any Other Thoughts on State Route 28 Corridor Development?**

### **Land Use Types**

**Retail / Service**

**Office**

**Medical**

**Multi-Family**

**Mixed-Use**



## State Route 28 Corridor • Special Planning Area Limit (West)





## State Route 28 Corridor • Special Planning Area Limit (East)





## State Route 28 Corridor • Special Planning Area

### Retail / Service





## State Route 28 Corridor • Special Planning Area

### Retail / Service





## State Route 28 Corridor • Special Planning Area

### Retail / Service (Adaptive Reuse)



## State Route 28 Corridor • Special Planning Area

### Office





## State Route 28 Corridor • Special Planning Area

### Medical



## State Route 28 Corridor • Special Planning Area

### Mixed-Use





## State Route 28 Corridor • Special Planning Area

### Mixed-Use





## State Route 28 Corridor • Special Planning Area

### Mixed-Use

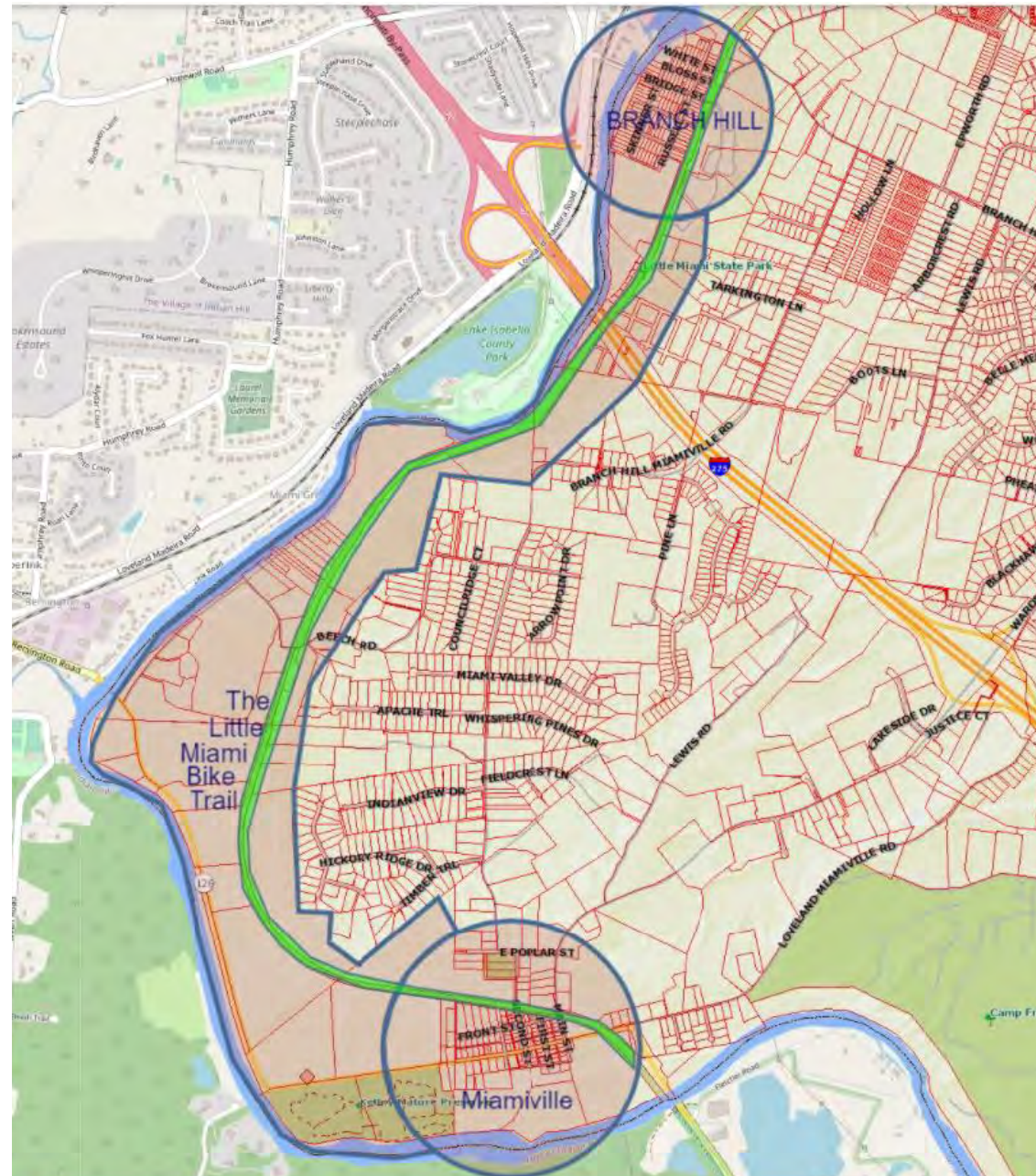




**Little Miami Scenic Trail (Branch Hill & Miamiville) • Special Planning Area****Topics for Breakout Group Exercise**

- 1. What is Your Future Vision / Desired Land Use for the Miamiville Area?**
- 2. What is Your Future Vision / Desired Land Use for the Branch Hill Area?**
- 3. Thoughts on Practical Constraints of Development in these Areas?**

## Little Miami Trail Redevelopment (Miamiville & Branch Hill Planning Area)





## Little Miami Trail Redevelopment (Miamiville & Branch Hill Area)





## Little Miami Trail Redevelopment (Miamiville & Branch Hill Area)





## What's Next?

**Next Steering Committee Meeting - November 2021**

**Public Open House - January 2022**